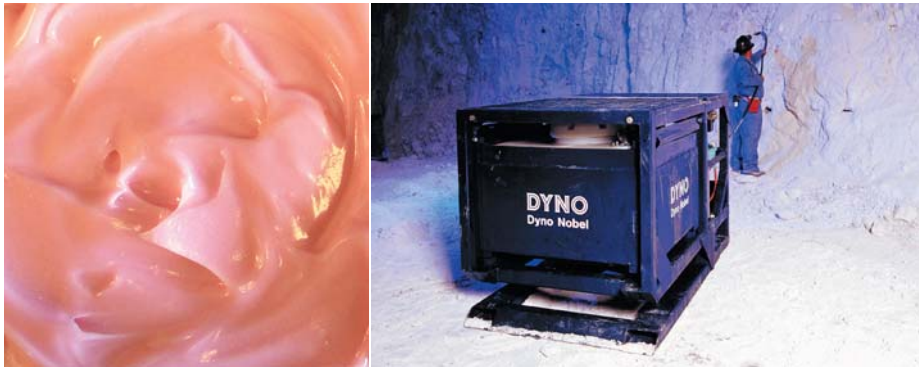


Sensitized Bulk Emulsion



Product Description

DYNO RU-A is a booster sensitive, high performance, repumpable bulk emulsion explosive designed specifically for use in underground construction, quarry and mining operations where contact is likely with concrete or shot-crete used for ground support. DYNO RU-A also applies in situations where pH basic ore and/or basic water conditions exist or where fumes of ammonia are problematic. DYNO RU-A is specifically applicable in shaft sinking, tunneling, drift and raise development, room and pillar, mechanized cut and fill, vertical crater retreat, uppers retreat, bench and block cave mining methods.

Application Recommendations

- **ALWAYS** use a Dyno Nobel cast booster for best results. The minimum cast booster recommended for use as a primer is 10 g @ 5° C (40° F) and above; 90 g down to -20° C (-4° F).
- **ALWAYS** double prime when bulk explosive columns exceed 6 m (20 ft). One primer should be positioned near the bottom of the hole and the second near to the collar.
- **ALWAYS** ensure primers are in the explosive column.
- **ALWAYS** consult a Dyno Nobel representative for specific recommendations before designing a DYNO RU-A blasting program involving the use of detonating cord.

Properties

MSDS
#1062

Density	(g/cc) Avg	1.20
Energy ^a	(cal/g) (cal/cc)	690 830
Relative Weight Strength ^a		0.78
Relative Bulk Strength ^a		1.14
Velocity ^c	(m/sec) (ft/sec)	5,500 18,000
Detonation Pressure ^c (Kbars)		91
Gas Volume ^a (moles/kg)		41.7
Water Resistance		Excellent
Minimum Diameter	(mm) (in)	45 1.75
Loading Method		Pumped or Extruded
Fume Class		IME1 and NRCan1 ^d

^a All Dyno Nobel Inc. energy and gas volume values are calculated using PRODET™, a computer code developed by Dyno Nobel Inc. for its exclusive use. Other computer codes may give different values.

^b ANFO = 1.00 @ 0.82 g/cc

^c Unconfined in 50mm (2 in) diameter.

^d Approved by Natural Resources Canada as NRC Fume Class 1

Hazardous Shipping Description

Explosive, Blasting, Type E 1.5D UN 0332 II



DYNO[®] RU-A

Technical Information



- DYNO RU-A may be used with detonating cord only under special conditions.
- Maximum hole depth is 30 m (100 ft) but special formulations are available for deeper boreholes. Consult your Dyno Nobel representative for details.
- Borehole sleep time is one (1) month.
- ALWAYS** use Dyno Nobel approved loading equipment which has been designed specifically for handling repumpable emulsion explosive for under-ground applications.
- Consider the Dyno Nobel DynoMiner™ APS and DynoMiner PVS loading systems where applications limit size and require portability. Contact your Dyno Nobel representative for details.
- ALWAYS** use bulk emulsion best practices during loading to minimize emulsion spillage around the blast area and to further limit preblast ammonia fume generation whenever possible.
- ALWAYS** insert the loading hose to the back of the hole before pumping DYNO RU-A to optimize loading density.
- ALWAYS** consult your Dyno Nobel representative for special equipment and loading recommendations before planning a DYNO RU-A blast program that requires collar loading.
- Specialized equipment features are necessary to enable the DYNO RU-A emulsion explosive to remain in upholes after loading. Contact your Dyno Nobel representative for equipment recommendations.
- ALWAYS** check any DYNO RU-A loading system before each use to ensure that all components meet operational standards including all safety systems. Equipment should be calibrated periodically to ensure emulsion explosive quality and explosive performance.

Transportation, Storage and Handling

- DYNO RU-A can be stored for 3 months at temperatures between -18° C and 32° C (0° F and 90° F). Older product should be used first and all storage tanks should be kept clean of residual product.
- Use only pumps which have been approved by Dyno Nobel for 1.5 emulsion explosive transfer. Pump type, pump speed, worn pump parts, repeated repumping and pumping against high hose pressures can increase DYNO RU-A viscosity and decrease shelf life.
- ALWAYS** monitor emulsion pump performance and check pumps periodically for excessively worn parts. Design storage facilities to minimize repeated pumping.
- Transport, store, handle and use DYNO RU-A in compliance with federal, state, provincial and local laws governing bulk explosives.

Product Disclaimer Dyno Nobel Inc. and its subsidiaries disclaim any warranties with respect to this product, the safety or suitability thereof, or the results to be obtained, whether express or implied, INCLUDING WITHOUT LIMITATION, ANY IMPLIED WARRANTY OF MERCHANTABILITY OR FITNESS FOR A PARTICULAR PURPOSE AND/OR OTHER WARRANTY. Buyers and users assume all risk, responsibility and liability whatsoever from any and all injuries (including death), losses, or damages to persons or property arising from the use of this product. Under no circumstances shall Dyno Nobel Inc. or any of its subsidiaries be liable for special, consequential or incidental damages or for anticipated loss of profits.

Dyno Nobel Inc.

2650 Decker Lake Boulevard, Suite 300, Salt Lake City, Utah 84119 USA
Phone 800-732-7534 Fax 801-328-6452 Web www.dynonobel.com

DYNO[®]
Dyno Nobel

Groundbreaking Performance™